



## **DANIAMANT** **L6 lifejacket light**

### Installation and Maintenance Instructions



#### **Description**

**L6** The L6 is a lifejacket light which is actuated manually.

#### **Daniamant Limited**

Unit 3, The Admiral Park, Airport Service Road, Portsmouth, UK PO3 5RQ  
Telephone: +44 (0)23 9267 5100 Facsimile: +44(0) 23 9267 5101  
[www.daniamant.com](http://www.daniamant.com)

79-114-001 Issue 8 (C6267)



## Installation

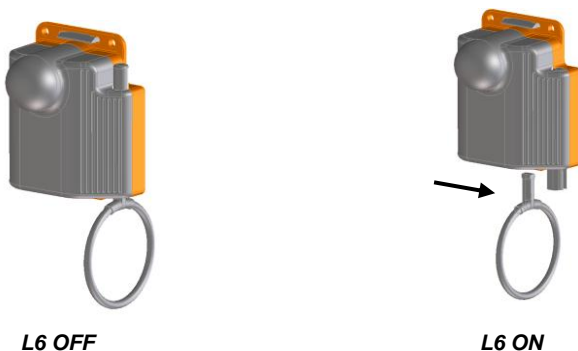
**L6** The L6 lifejacket light is for use on all types of lifejackets.

An illustration showing a typical attachment method is shown on Page 3 of this manual. It is the responsibility of the lifejacket manufacturer to ensure that the light is attached securely and is in the correct position on the lifejacket. The L6 light is supplied with a fixing clip. The clip is intended to be placed behind a strip of lifejacket material and the light secured by pressing it into the clip.

## Operation

The L6 light is switched on by pulling the ring downwards, or by pressing the plunger into the body of the light. The ring is designed to detach from the light when activated.

The light may be extinguished by refitting the ring (from the direction shown by the arrow) and pressing the plunger back into the body of the light.



## Maintenance

### Routine service

L6 units are maintenance free, but the following checks should be made annually:

1. Inspect light for signs of damage or corrosion.
2. Pull toggle located towards the bottom of the unit, which will operate a switch and complete the circuit. The light will commence flashing. To extinguish the light, carefully locate the toggle in the switch and push the switch back into the case.

## Safety

L6 lights contain Lithium cells. These must be handled correctly:

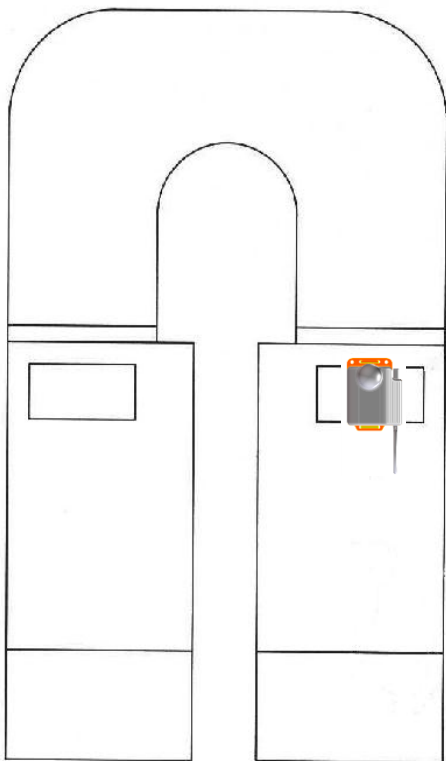
- Do not dismantle battery pack
- Do not make any external electrical connection
- Do not recharge
- Do not incinerate

Store between  $-30\text{ }^{\circ}\text{C}$  and  $+65\text{ }^{\circ}\text{C}$

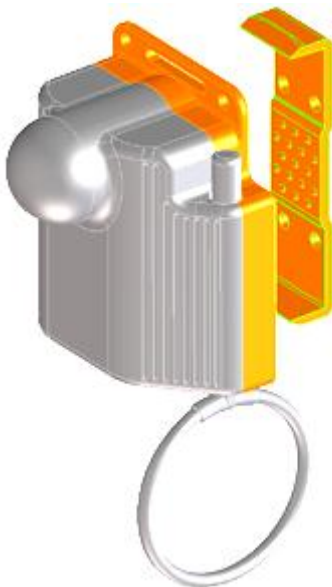
## Health and Safety information

Daniamant lithium-powered marine safety light systems have a design life of 5 years. The batteries are hermetically sealed pressurised primary Lithium/Manganese cells, and as supplied are electrically protected by a solid state device, and are environmentally protected by a moulded plastic housing. In this condition the units pose no definable hazard to health.

Information on the composition and behaviour of these products is contained in the Product Safety Data Sheet, available on request from our website ([www.daniamant.com](http://www.daniamant.com)) or on request.



*L6 light fitted to jacket*



*L6 light and fixing clip separated to show material path*

## Product Disposal Instructions

The symbol shown here and on the product means that the product is classed as Electrical or Electronic Equipment and should not be disposed with other household or commercial waste at the end of its working life.



The Waste Electrical and Electronic Equipment Regulations 2006 (the WEEE Regulations) transpose the WEEE Directive (2002/96/EC) into UK law. They have been put into place to ensure that producers fund the cost of collection, treatment, recovery and environmentally sound disposal of WEEE, thereby minimising the impact of such waste on the environment and reducing the amount of waste going to landfill.

To ensure compliance with the WEEE Regulations, the Survivor Location Light should be returned to Daniamant or deposited in your nearest WEEE Designated Collection Facility, operated by your Local Authority. From 2010, it will also be a requirement to recycle batteries and, therefore, it is recommended that, from 1 February 2010, all batteries are deposited at your nearest battery collection point. Please contact your Local Authority or visit the Daniamant website at [www.daniamant.com](http://www.daniamant.com) for contact details.

Further copies of this installation and maintenance instructions are available to download from our website [www.daniamant.com](http://www.daniamant.com)  
A copy of these instructions must be held with the ships/owners training manual.